

Be Future Ready.



**WESTBOURNE
COLLEGE**
[SINGAPORE]

**IB Diploma
& IGCSE**





“I’ve been in a lot of international schools here, and the Westbourne experience is drastically different. One of the most valuable parts of being at Westbourne is how they treat you as a young adult — it makes the transition to the workforce much smoother and gives you a real sense of achievement.”

GABRIEL, IB STUDENT (2024)



HEAR MORE “
from me”



HEAR “
from my parent”



Our mission is clear

To develop future ready leaders with the curiosity, creativity, and capability to shape a rapidly developing world.

Our results speak for themselves.



Westbourne redefines education with a future-focused, global approach that prepares 14–18-year-olds for career success well before university.



Students are treated as young professionals, gaining independence, real-world experiences, and industry connections for an unparalleled head start.



Specialising in Business and STEM, we prepare ambitious students for careers of the future through a world-class approach to the IB and IGCSE.

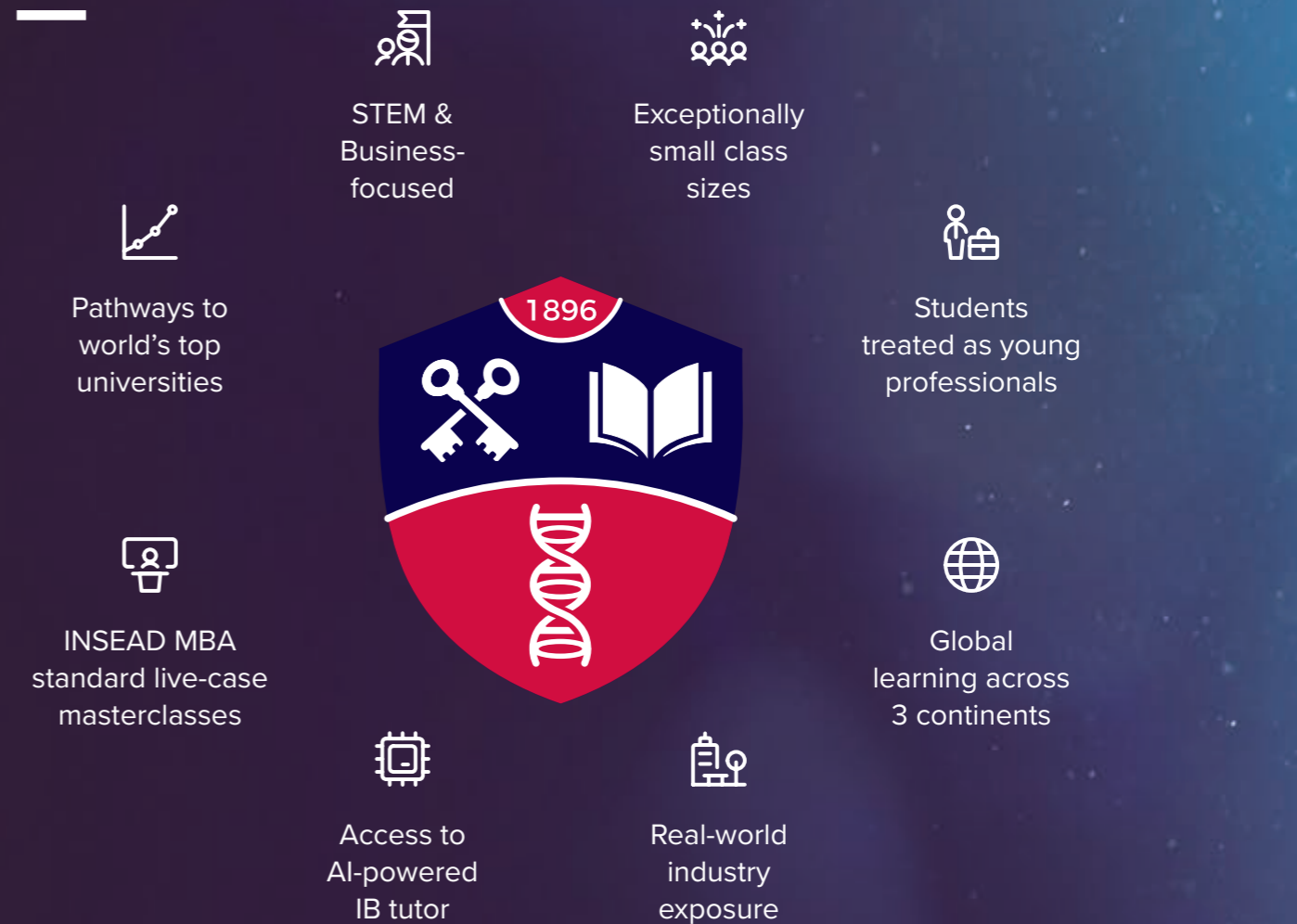


Our international school is authorised to enrol Singapore citizens into our IBDP. No MOE approval is required.



The Westbourne Advantage

Westbourne College is specifically designed for academically elite, globally minded students seeking pathways to the best universities in the UK, Australia, Singapore, the US, and around the world.



Consultation

Personalised, holistic roadmap for every student

Orientation

Students onboarded as future leaders, not just learners

Academic

STEM & Business-focused curriculum for high-growth industries

Career Skills

Real-world exposure through industry visits and career workshops

Global Exposure

Learn from industry-experienced teachers around the world

University Preparation

Expert guidance and pathways to top global universities

Exceptional results



1st in Australia (2024)

Highest percentage of students achieving 45 IB points



#2 IB Boarding School for Results in the UK

Smaller schools, best-schools.co.uk



Graduates rank within the top 1-2% worldwide

Westbourne International



90% of graduates achieve Top 20 university places

Westbourne School, Russell Group entry



“Westbourne really brings out the best in a person and instills a sense of self-confidence.”

MANAN, IB STUDENT (2024)



“ HEAR MORE from me

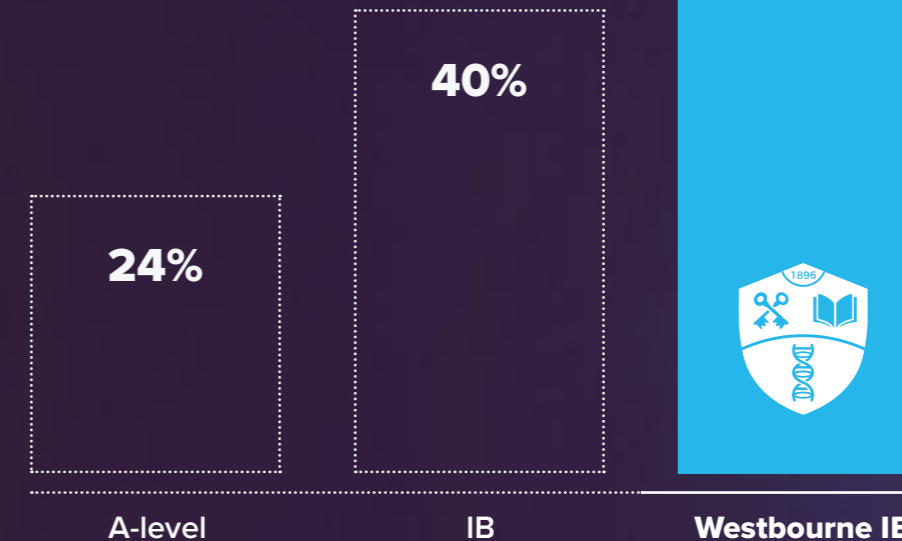


“ HEAR from my parents



% of graduates entering top 20 UK universities

or equivalently elite international institutions



Higher Education Statistics Agency, 2016; Westbourne graduates 2013 - 2022

Westbourne IB Diploma further **DOUBLES** this advantage

Future-focused curriculum

Designed to empower 14–18 year olds, our future-focused curriculum cultivates the skills, mindset, and knowledge needed to thrive in a constantly evolving global environment. Built on a strong foundation in STEM and Business, students are equipped to lead, innovate, and succeed in global careers.

IB DIPLOMA PROGRAMME

The 'gold standard' in secondary education. The Westbourne IB Diploma Programme is tailored to fully prepare students for the careers of the future.

Core subjects

Theory of Knowledge (TOK)
Extended Essay (EE)
Creativity, Activity & Service (CAS)

Academic subjects

Mathematics

Analysis & Approaches,
Applications & Interpretations

Science

Biology, Chemistry, Physics,
Computer Science,
Environmental Systems & Societies

Individuals & Societies

Business Management, Economics,
Environmental Systems & Societies

Language & Literature

English Language & Literature,
Chinese Language & Literature,
Language A - School-supported
and self-taught

Language Acquisition

Chinese, English, Spanish Ab Initio,
Mandarin Ab Initio. Additional
languages may be considered

3 subjects at Higher Level
to create depth

3 subjects at Standard Level
to develop breadth

*subject to demand

IGCSE

Preparatory Course for
International General Certificate
of Secondary Education (IGCSE)

English Language

Chinese Language

Mathematics

Additional Mathematics

Economics

Business Studies

Computer Science

Global Perspectives

Physics

Biology

Chemistry

Real-world relevance

Through our Industry Hour series, students regularly meet with entrepreneurs, innovators, and leaders in Business and STEM.

Our students gain:



Career insights from professionals working at the forefront of high-growth industries



Knowledge of future skills, innovation, entrepreneurship, and leadership



A direct connection between classroom learning and real-world application



Opportunities to build confidence, engage with mentors, and explore potential career paths



Accelerated IB Diploma Pathway

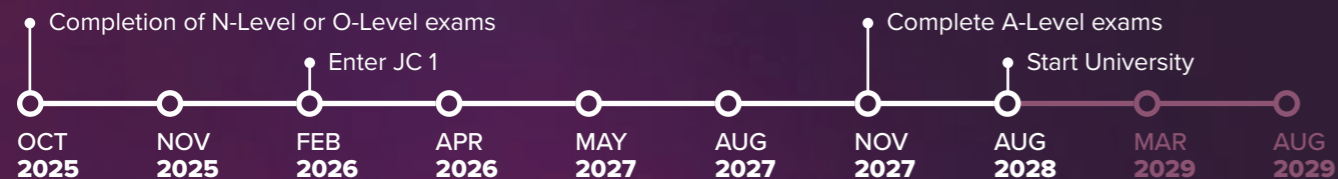
For O-Level & N-Level students

Westbourne's accelerated IB Diploma pathway enables eligible students to fast-track their education and progress to local autonomous universities up to 2 years earlier than other pathways.

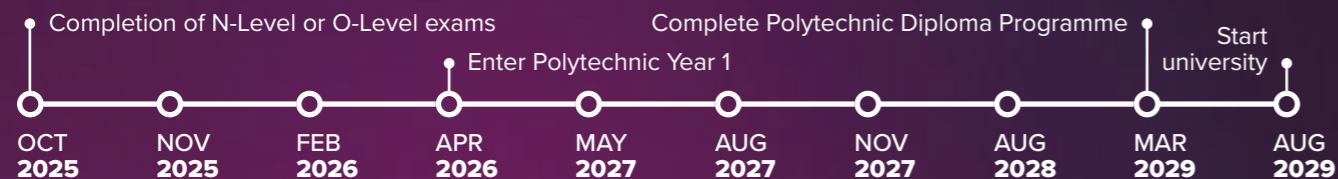
WESTBOURNE ACCELERATED IB DIP. PATHWAY SAVES 24 MONTHS



SINGAPORE A-LEVEL SAVES 12 MONTHS



POLYTECHNIC DIPLOMA



Fees & Admissions

ADMISSIONS PROCESS

1. School reports

Email your last two years of school reports to apply@westbournecollege.com.sg

2. Entrance testing

Online, or in-person, administered by our friendly admissions team.

Aptitude test ♦ English test ♦ Mathematics test

3. Interview

With our Principal or IB Coordinator.

Applications are typically processed within one week.

INFORMATION FOR SINGAPORE CITIZENS

Our school is proud to welcome Singapore citizens.

IB Diploma Programme

No MOE approval is required for Singapore citizens

IGCSE Programme

MOE approval is required prior to enrolment. Our Admissions team will guide families through this process.

TUITION FEE

Our unique model includes an all-inclusive fee structure.

Up to 40% scholarships are available for talented students, subject to a scholarship test.

Academic Year 2026/27

Singaporeans & PR

IGCSE **S\$33,100***
IBDP** **S\$34,900* ****

International students

IGCSE **S\$42,000***
IBDP **S\$43,850* ****

Enrolment Fee **S\$2,000* *****

There are no additional application, registration or capital levy fees.

* Please note that all fees and charges are applicable for the 2026/27 academic year and are subject to annual review. We are a GST-registered company

** Inclusive of programme fees for UK and Sydney campus trips. Excludes travel and accommodation costs

***Applies to all new students

One School, Three Continents



#1 for
Innovation
2024 ^{*ISA}



#1 for Results
2023 &
2024



IB excellence
launched
2023



Countdown to
Westbourne
India 2026

Contact Us



westbournecollege.com.sg



apply@westbournecollege.com.sg



+65 6235 1538